

## 26 m Twin Axe - 24 Passengers

MV "VERDI"



**OPUS MARINE**

Lademannbogen 22 | D-22339 Hamburg | Germany

Tel.: +49 40 22 63 203 0

Fax: +49 40 22 63 203 99

Web: [www.opusmarine.com](http://www.opusmarine.com)

E-Mail: [chartering@opusmarine.com](mailto:chartering@opusmarine.com)

## 26m Twin Axe - 24 Passengers MV "VERDI"

### Main Particulars:

Built:	2015
Class:	BV 1+ HULL MACH Light Ship/Fast Utility Area 3
Complement:	24 Passengers (15 +9) / 2 Crew
Tonnage:	168 GRT / 50 NRT
Length o.a.:	26,1 m
Beam:	10,27 m
Draft:	2,35 m max
Tank capacities:	14.200 l MGO / 1800 l Fresh water

### Cargo Capacities:

Foredeck:	50 sqm
Aftdeck:	-
Deck strength:	1,5 mts/sqm
Deck crane:	1 x Heila
Model:	HLM 20-2s Marinecrane
Safe Working Load:	2,2t@8,6m

### Machinery:

Main Engines:	2x Caterpillar C32 TTA
Power:	2x 895 kW
Auxiliary Engines:	2 x 22.5 kW / 28.0 kVA
Propulsion:	2x Fixed Pitch Propellers
Bow Thruster:	2 x 52 kW hydraulically driven

### Performance:

Speed max / Service:	26kn / 23kn
Consumption:	300 ltr/h (Service)
Range (max.):	700 nm

### Navigation & Communication Equipment:

Radar:	1 x Radar
AIS:	Yes
GPS / DGPS:	GPS
ECDIS:	Yes
Compasses:	Mag, Sat
Echosounder:	Yes
Autopilot:	Yes
Radio Equipment:	GMDSS, Sea Area A2
Communication Equipment:	GSM / Email

### Safety Equipment:

Life Rafts / Jason's Cradle / Rescue cage / Life vests / Immersion suits

### Extras:

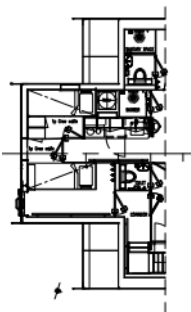
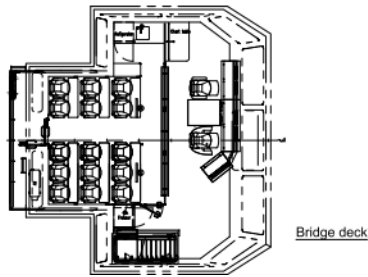
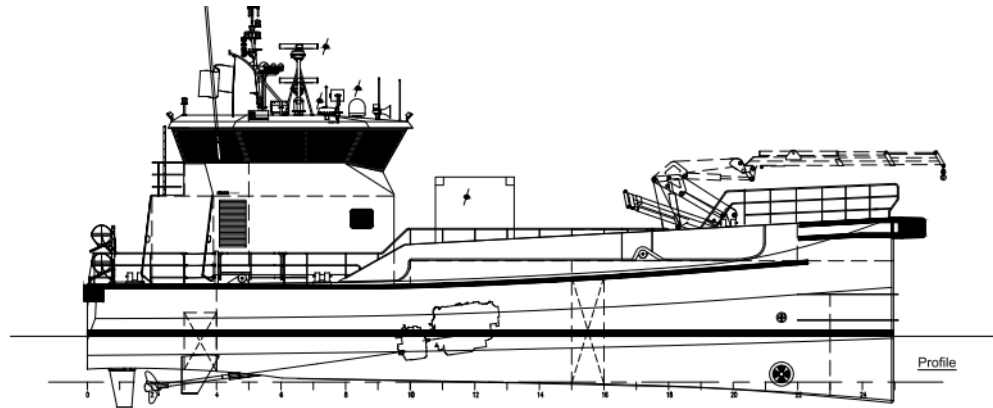
Flatscreen TV, 2 x sanitary facilities, showers, dressing area for survival suits incl. storage



#### **OPUS MARINE**

Lademannbogen 22 | D-22339 Hamburg | Germany  
Tel.: +49 40 22 63 203 0  
Fax: +49 40 22 63 203 99  
Web: [www.opusmarine.com](http://www.opusmarine.com)  
E-Mail: [chartering@opusmarine.com](mailto:chartering@opusmarine.com)

26 m Twin Axle - 24 Passengers  
MV "VERDI"



Optional  
2x 1p Crew cabins

