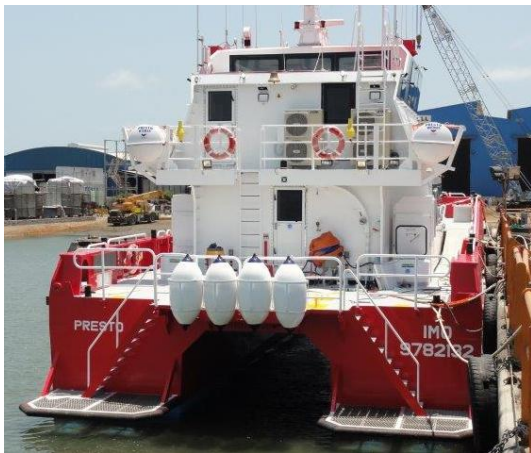


## 28m CTV Class MV "PRESTO" / "VIVACE"



## 28m CTV Class MV "PRESTO" / "VIVACE"

### Description

#### MAIN PARTICULARS

Company/Owner	OPUS MARINE GmbH
Vessel name	PRESTO / VIVACE
Vessel type	Catamaran
No. of PAX	24
Flag state & certification	Germany
Classification Society & Notation(s)	LR
Builder/Yard/number	Strategic Marine, Vietnam
Hull material	Aluminium
Year of Build	2015
Length Over All (LOA) [m]	27,5
Beam over all [m]	8,9
Extreme draught [m]	1,7
Operational Draught [m]	1,6
Bow Height [m] @ transfer point	3,67
Fresh water capacity [litres]	3.000
Fuel transfer capability	Yes
Fuel Capacity [litres]	35.000

#### OPERATIONAL PARTICULARS

Service speed [knots]	26,5
Max. speed [knots]	28,5

#### MACHINERY PARTICULARS

Engine manufacturer/Engine type	Caterpillar C18
Number of engines installed.	4
Total Installed power [kW]	2.604
Fuel Specification/grades [Standard] incl. lubricants	ISO 8217:2012 DMX
Bow thruster	No
Fuel consumption [litres/h] @ service speed @ seastate 2	Est. 400
Fuel consumption [litres/h] @ Max. speed @ seastate 2	Est. 500
Fuel consumption [litres/h] @ 20 kn. @seastate 2.	Est. 380
Propulsion system type	WaterJet
Propulsion system manufacturer and make	4 x Hamilton HM521



## 28m CTV Class

### MV "PRESTO" / "VIVACE"

#### Details

#### DECK ARRANGMENTS & EQUIPEMENT

Crane	1x 21,4tm crane on foredeck
Crane specification if any	Palfinger PK 23500M
Container position details.	2x fwd / 1x aft
HP washer	Yes
CARGO capacity total [t]	30,0
Cargo capacity fore deck[t]	20,0
Cargo Capacity aft deck [t]	10,0
Specific deck load [t/m²]	2,0
Free Deck Space fore deck[m²]	50
Free deck space aft deck [m²]	27
Sewage discharge shore connection	Yes
Oily Bilge water discharge shore connection	Yes
Transfer system/Prepared for Transfer system	No
Further features:	
	Dampened bow fender system
	Optional: 1 ton A-Frame in aft position



**OPUS MARINE GmbH**

Lademannbogen 22 | D-22339 Hamburg | Germany

Tel.: +49 40 22 63 203 0

Fax: +49 40 22 63 203 99

Web: [www.opusmarine.com](http://www.opusmarine.com)

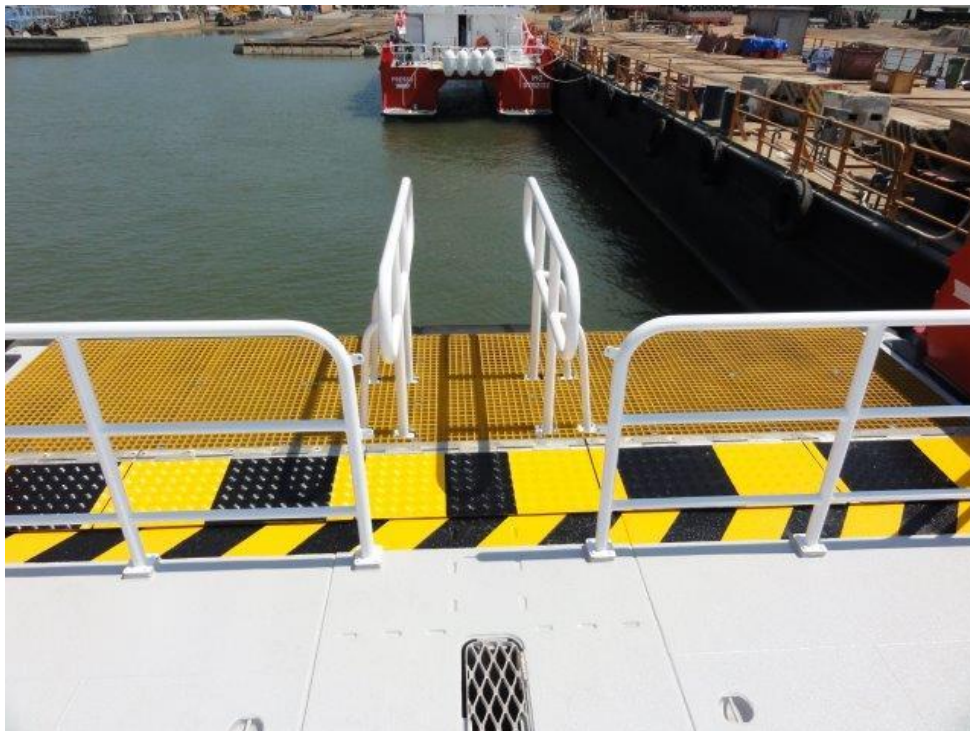
E-Mail: [chartering@opusmarine.com](mailto:chartering@opusmarine.com)

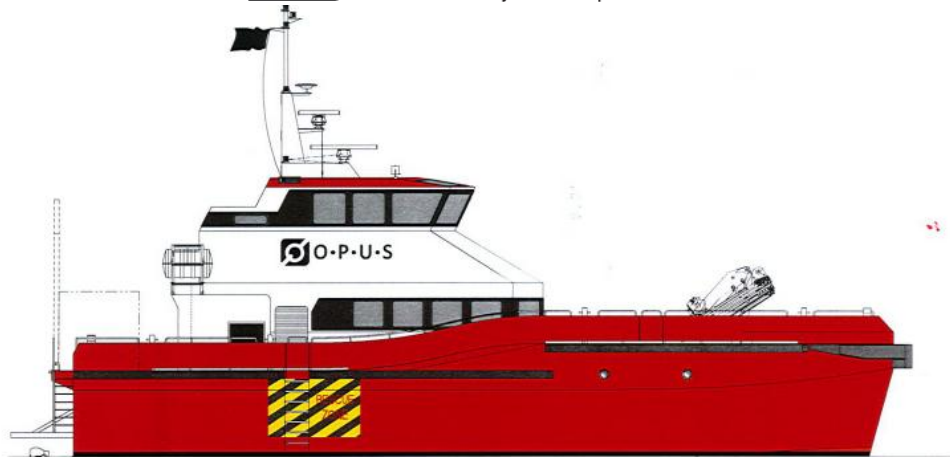
**28m CTV Class**  
**MV "PRESTO" / "VIVACE"**



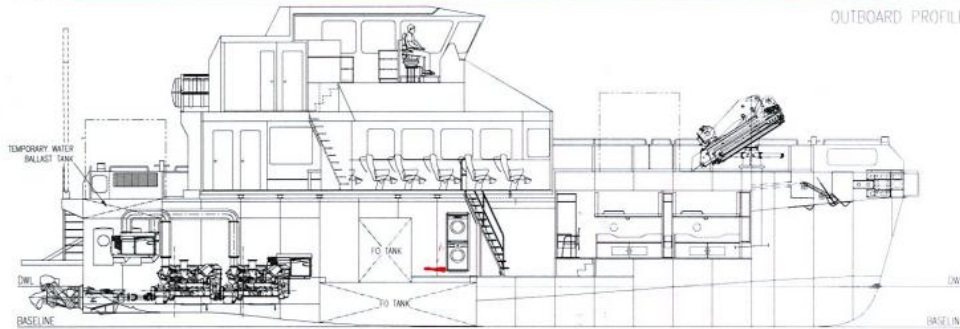






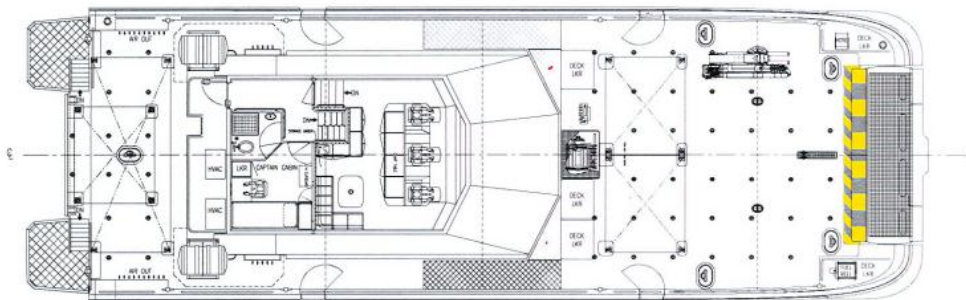


OUTBOARD PROFILE



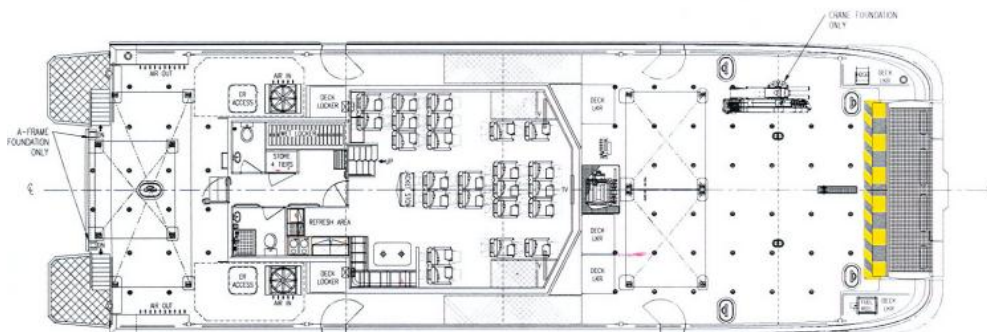
INBOARD PROFILE

FR.0	FR.1	FR.2	FR.3	FR.4	FR.5	FR.6	FR.7	FR.8	FR.9	FR.10	FR.11	FR.12	FR.13	FR.14	FR.15	FR.16	FR.17	FR.18	FR.19	FR.20	FR.21
TRANSOM	1200	2400	3600	4800	6000	7200	8400	9600	10800	12000	13200	14400	15600	16800	18000	19200	20400	21100	22300	23500	24700



PLAN VIEW BRIDGE

FR.0	FR.1	FR.2	FR.3	FR.4	FR.5	FR.6	FR.7	FR.8	FR.9	FR.10	FR.11	FR.12	FR.13	FR.14	FR.15	FR.16	FR.17	FR.18	FR.19	FR.20	FR.21
TRANSOM	1200	2400	3600	4800	6000	7200	8400	9600	10800	12000	13200	14400	15600	16800	18000	19200	20400	21100	22300	23500	24700



PLAN VIEW ON MAIN DECK

FR.0	FR.1	FR.2	FR.3	FR.4	FR.5	FR.6	FR.7	FR.8	FR.9	FR.10	FR.11	FR.12	FR.13	FR.14	FR.15	FR.16	FR.17	FR.18	FR.19	FR.20	FR.21
TRANSOM	1200	2400	3600	4800	6000	7200	8400	9600	10800	12000	13200	14400	15600	16800	18000	19200	20400	21100	22300	23500	24700

